

# COPN Workshop: Developing a Strategy for Health Equity

February 22, 2022

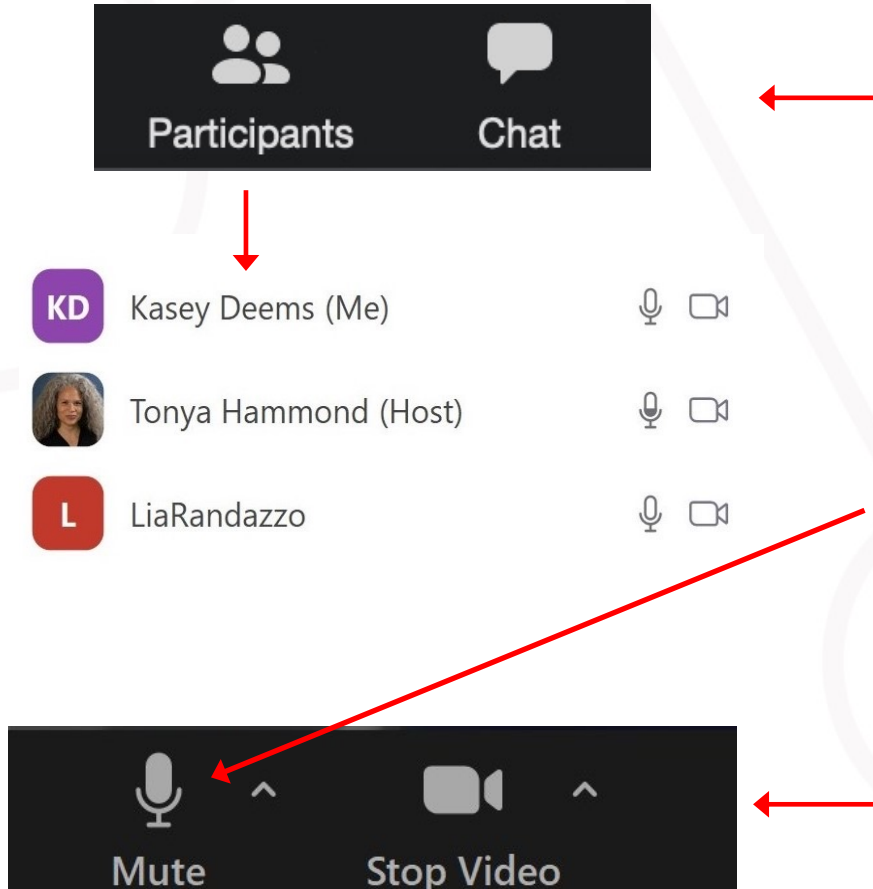
OVERDOSE PREVENTION NETWORK CALIFORNIA



CENTER FOR  
HEALTH  
LEADERSHIP &  
PRACTICE

PUBLIC  
HEALTH  
INSTITUTE®

# Welcome, and thank you for joining



Use the "Participant" and "Chat" icons to open those panels

To mute or unmute yourself, hover over the microphone icon by your name or click the **"Mute Me/Unmute Me"** button at the bottom of your screen.

To switch your video on or off, click the **video icon** at the bottom of your screen.



Director, Program Office, CDC  
Cooperative Agreement

Deputy Director, Center for  
Health Leadership and Practice

#### BACKGROUND

25+ years in community health, non-profit sector, and school-based programs and family centers

Develops strategy and overall operations of CHLP

Thought leader applying strategic design and industry leading approaches (systems, triple impact, human design)



**Karya Lustig,  
MA, ISS**



# Learning Objectives

- Participants will deepen their strategic mindset, embedding health equity as a core strategic imperative within their local work.
- Participants will have a shared understanding of how to complete the COPN Health Equity tool locally.

**Helping you to save  
lives with partnerships,  
strategies, and resources  
for overdose prevention.**

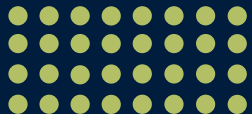


Transform your efforts with  
**multi-sector partnerships**

Learn how at  
**[nopn.org/partnerships](http://nopn.org/partnerships)**



# Health Equity





# What is health equity?

## A TALE OF TWO ZIP CODES

with GEORGE TAKEI



### MEET DEB & MARIA


Deb & Maria live one mile apart, but Deb will live 18 years longer than Maria.

Wish to find out why?



# How does health equity relate to overdose prevention?

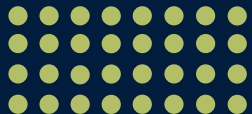




*How do we reframe our overdose prevention strategies to make sure we are working with communities rather than to communities?*



# **NOPN Health Equity Tool**





## Introduction

Our country's response to drug use—from supportive treatment policies to punitive sentencing practices—is highly unequal by race and class. Use this tool to organize your coalition or group's big picture thinking around health equity. Start by defining your work, the context, and the why before completing the rest of the worksheet. As a team, consider the core areas of your work through the lens of health equity using the NOPN model (pages 2-3).

## Impact statement

What is the impact statement for your coalition or local overdose prevention work? What are you working to achieve?

## Socio-economic, political, and cultural context

Which populations experience the greatest historical and/or current burden? List 3 or more data points (statistics, graphs/charts, maps) demonstrating the context surrounding health disparities in your community.

## Rationale

Provide 2-3 bullet points describing the rationale for your coalition to take a health equity lens. Why is it important?



# Impact Statement

Refer to your Big Picture tool. Will this impact be achievable across all areas of your community?



# Socio-Economic, Political and Cultural Context

Refer to your Big Picture tool. Which populations in your community experience the greatest historical and/or current burden?



## Rationale

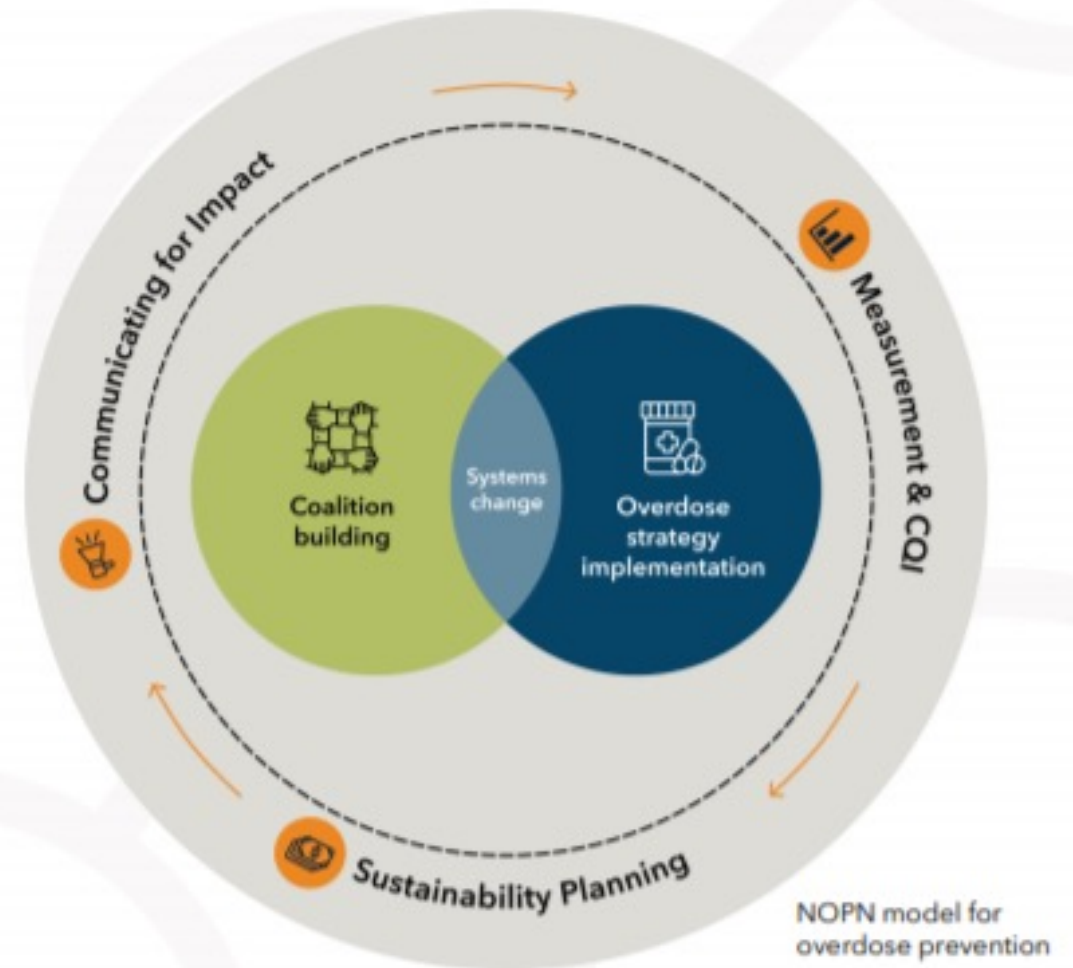
Provide 2-3 bullet points describing the rationale for your coalition to take a health equity lens. Why is it important?



## Key Activities

On the next page, complete the sections for each of the following areas of your work:

- **Overdose prevention strategies:** How you implement your overdose prevention strategies and which strategies you choose
- **Coalition building:** How you build and grow your coalition
- **Sustainability:** How you think about sustaining the work of your coalition
- **Communication:** How you approach communications, both internally within your coalition and with external stakeholders
- **Data:** How you measure your work, including which data you choose and how you collect it





OVERDOSE PREVENTION STRATEGIES   COALITION BUILDING   SUSTAINABILITY   COMMUNICATION   DATA

**Stakeholders**

List 3 or more new stakeholders that your coalition should engage to better address health equity in your work. They could be connected to any of the elements of the NOPN model.

**Priority activities**

For each NOPN model element, list at least one way that your coalition can prioritize health equity and inclusion. What is most important for your coalition to focus on?

**Short-term outcomes and indicators**

List at least 3 short-term (3 months) indicators to measure how your coalition can better address health equity in the priority activities above.

**Long-term outcomes and indicators**

List 3 longer-term (2-3 years) indicators to measure how your coalition can help improve health equity going forward.

	OVERDOSE PREVENTION STRATEGIES	COALITION BUILDING	SUSTAINABILITY	COMMUNICATION	DATA
<b>Stakeholders</b>  List 3 or more new stakeholders that your coalition should engage to better address health equity in your work. They could be connected to any of the elements of the NOPN model.					
<b>Priority activities</b>  For each NOPN model element, list at least one way that your coalition can prioritize health equity and inclusion. What is most important for your coalition to focus on?					
<b>Short-term outcomes and indicators</b>  List at least 3 short-term (3 months) indicators to measure how your coalition can better address health equity in the priority activities above.					
<b>Long-term outcomes and indicators</b>  List 3 longer-term (2-3 years) indicators to measure how your coalition can help improve health equity going forward.					



## Stakeholders

Which partners are critical to ensure your overdose prevention efforts reach all members of your community?

List 3 or more new stakeholders that your coalition needs to engage to better address health equity for each category of the NOPN model (prevention strategies, coalition building, sustainability, data, and communication).



## Pathway to Change / Key Activities

List at least one way that your coalition can prioritize health equity and inclusion for each category of the NOPN model (prevention strategies, coalition building, sustainability, data, and communication).

What is most important for your coalition to focus on?



## Indicators of Success

How can your coalition collect and communicate data to measure improvements in health equity over the next 12 months?

How can your coalition collect and communicate data to measure improvements in health equity over the next several years?



# Breakout Session





# Instructions

- Pick 2 of the 4 sections below and spend 5 mins discussing each of those 2 “prompts” in the health equity tool (see link in chat box to download the tool):
  - Impact statement
  - Socioeconomic, political and cultural context
  - Stakeholders
  - Priority activities
- This will be FAST. The idea is to do a quick brainstorm the sections to see how you might utilize the tool locally to deepen your strategic work.



# Report Back





# Discussion

- What were the key points or takeaways from your discussion?
- Did you have any a-ha moments? How is this prompting new ways of thinking about your local work?



**Thank you!**  
**Let us know how we can  
support your overdose  
prevention efforts.**

Contact us at  
**[info@healthleadership.org](mailto:info@healthleadership.org)**

For more resources and to sign up  
for our newsletter visit  
**[californiaopioidsafetynetwork.org](http://californiaopioidsafetynetwork.org)**



OVERDOSE  
PREVENTION  
NETWORK  
CALIFORNIA

UPCOMING WEBINAR

# **NOPN Workshop: Trauma-Informed Practice Part 1**

Wednesday, February 23, 2022  
11:00 AM - 12:00 PM

